



MONTHLY MEMBERSHIP PROGRESS REPORT

District 321B1

Results as of: 03/31/2019

GMT: ANIL TULSYAN

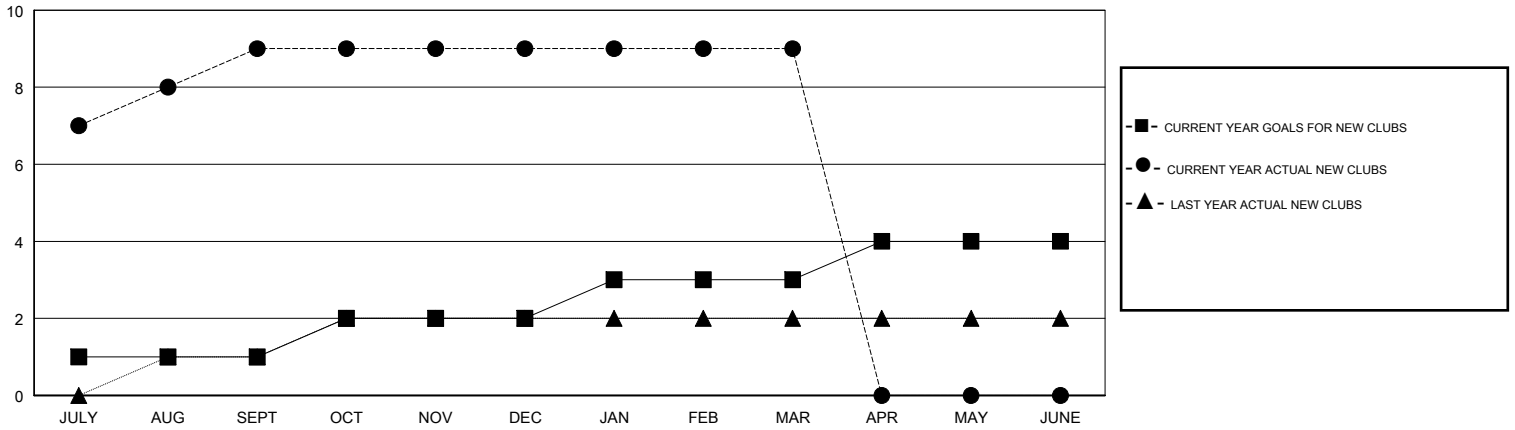
LOCATION INDIA

GMT CA

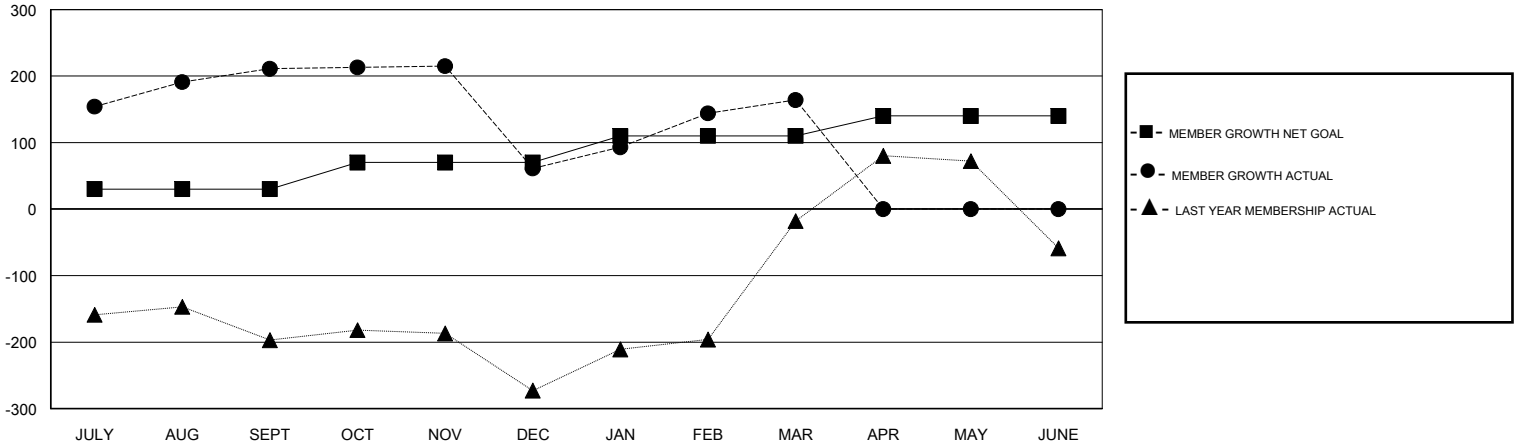
Clubs			
RESULTS FOR 2018-2019			
QUARTER	NEW CLUB GOAL	NEW CLUBS	DROPPED CLUBS
JULY/AUG/SEPT	1	9	0
OCT/NOV/DEC	1	0	6
JAN/FEB/MAR	1	0	0
APR/MAY/JUNE	1	0	0

Members			
RESULTS FOR 2018-2019			
QUARTER	MEMBER GROWTH NET GOAL	MEMBER GROWTH ACTUAL	DROPPED MEMBERS ACTUAL (including transfers)
JULY/AUG/SEPT	30	301	54
OCT/NOV/DEC	40	30	178
JAN/FEB/MAR	40	141	5
APR/MAY/JUNE	30	0	0

GOALS AND ACTUAL NEW CLUBS CUMULATIVE



GOALS AND ACTUAL MEMBERS CUMULATIVE



DROPPED CLUBS: 6	37 CLUBS OF 95 ADDED 1 OR MORE NEW MEMBERS	<u>GENDER DISTRIBUTION</u>	
DROPPED MEMBERS		MALE	1,751 (57.02%)
DECEASED	3	FEMALE	1,320 (42.98%)
CLUB CANCELLED	105	Women Percentage Fiscal Year Goal: 45%	
OTHER	129	TOTAL FAMILY UNIT MEMBERS	1,903
TOTAL	237	FAMILY MEMBERS PAYING HALF DUES	1,024

[CLICK HERE FOR CUMULATIVE MEMBERSHIP DATA](#)